

TREASURES OF THE MIND



Dreaming John Maltby

2nd June – 24th July 2026

10.30 – 5pm Tuesday – Saturday

Private View Sunday 31st May 2-5pm

JOHN MALTBY BREON O'CASEY

with

TABBY BOOTH ~ paintings

KATE SAMPSON, NIGEL LAMBERT ~ ceramics

NANCY PICKARD, GUY ROYLE ~ jewellery

and more!

Revealing a new hoard of hidden works by JOHN MALTBY
spanning the years 1961-2020



YEW TREE GALLERY

Keigwin, nr. Morvah, Cornwall TR19 7TS www.yewtreegallery.com

The breadth of creativity in this exhibition reveals the vibrant imagination of these artists!



Three Angels



Green Man - Lord of Misrule



Two early teapots



Wooden boats (1960s)

Unexpectedly, and much to our delight, concealed cupboards in John Maltby's house have recently revealed a stash of over 100 previously unseen works. These are mainly what he wanted to keep for himself and his family. Ranging from his early days as a potter and model-maker, through all the painted wood automata and swing-boats, the bold sculptural vessels of the '80s and '90s and on to the more recent figurative work ~ there is something from each era of his creative working life in this exhibition. We are grateful to the Maltby family for the opportunity to exhibit and sell this unique collection.



Shrines, chests of drawers, table settings and board games featured among his earliest stoneware themes, followed soon after by the colourful enamelled work, inspired by the innovative techniques of the 17th century Japanese potter Ogata Kenzan.

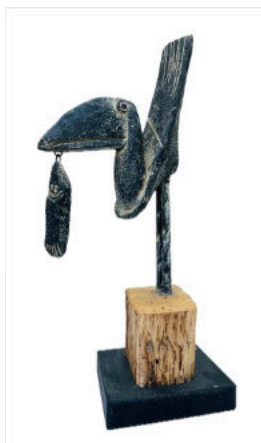
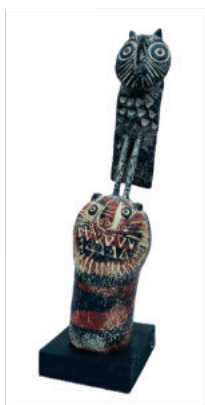
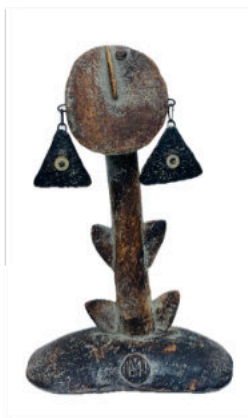


These functional forms gradually evolved in the '80s and early '90s into bold painterly, larger vessel forms more akin to pure sculpture. At this period John was much in demand for exhibitions in this country and abroad.





All the while John was working with clay he continued to make amusing models and automata as well as paintings. Some of his boat automata were huge, spanning a complete wall!



John's work which is most familiar to people in recent years is the figurative clay sculpture which he started to make in the mid '90s after undergoing severe heart surgery. Emerging originally as very small pieces, they gradually became larger and more complex as he gained in strength.



Another renowned artist of multi-faceted creativity is BREON O'CASEY (1928-2011).

He came to live in St Ives at the height of its artistic fervour in the mid-1950s when innovative artists from all over the globe were converging on the Cornish fishing village that had a name for flouting the artistic conventions of the day. Here Breon thrived, moving between jewellery making (whilst working as a telephonist to feed his family!), sculpture assistant to Barbara Hepworth, tapestry weaving and eventually concentrating more fully on painting, print-making and his own sculpture.

We are showing Breon's limited edition prints in this exhibition. He writes of his own approach to print-making: 'A print is a print, and I like to keep them simple. Picasso loved experimenting with different combinations of methods for his linocuts, whereas Matisse's linocuts are white lines on black; his etchings black lines on white – the simplest method. I side with Matisse. ...At least as much effort goes into a print as a painting. The only difference is that they are sold for less money.'



Brown Bird in Red carborundum print



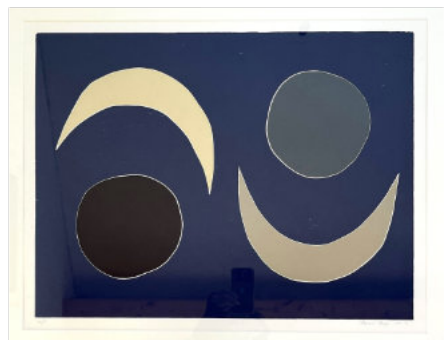
Bird in Green etching AP



Tropical Bird



Triangles into Square etching & linocut



Four Moons Carborundum



TABBY BOOTH's intriguing stylised, monochrome paintings reflect her love of wild creatures and folklore. She and her printmaker husband James Heslip moved from a Thames houseboat to Cornwall five years ago, creating a coastal home full of colour, esoteric curios and random objects gathered from shore and woodland. Her collection here is based on birds, animals and insects specific to Cornwall. Her observation and knowledge of these creatures allows her creative distortion of the images to accentuate rather than detract from their natural characteristics. Appropriately presented in old frames and carved wooden bowls they hang in happy conjunction with the stoneware figurative sculpture of John Maltby.





KATE SAMPSON too is interested in ancient folklore, wild animals, hidden insects and the life of the countryside. Her colour palette however is rich with many hues and her decorative technique involves layering fine brushwork with sgraffito and wax resist to produce vibrant, painterly decoration. Kate's background in Illustration stimulates her to approach clay as though it were an artist's canvas. Fishes and birds predominate in this collection of stoneware dishes



NANCY PICKARD studied Ceramics at Cardiff University, where John Maltby was an influential visiting lecturer in the 1980s. A multi-disciplinary artist, she makes paintings and sculpture as well as the jewellery which incorporates ceramic, silver, enamelling and semi-precious stones. Motifs within her work hark back to the symbols and runes of far distant times, as well as being peppered with references to fossils, crosses, plants and animals. What entices her most is the magical transformation of materials and colour when subjected to heat and flame.





The painterly ceramic tableware by NIGEL LAMBERT makes a welcome return to the gallery. Ever innovative in his shapes and decoration, Nigel has been a fervent admirer of the work of both John Maltby and Breon O'Casey ever since his student days in Cornwall. The bold brushwork in the decoration of his woodfired slipware ensures no two pieces are the same, which makes for a joyful sight at the dinner table and makes each meal special.



No Yew Tree exhibition would be complete without a collection of GUY ROYLE's jewellery!

As ever, he delights us with a new collection of exquisitely crafted necklaces, bangles, earrings and brooches in sterling silver with touches of 18ct gold and semi-precious stones.

There is new work from REECE INGRAM in the sculpture gardens: a magnificent Raven in Kilkenny Stone, a sleeping badger The Dreamer in Ancaster stone and a Sheep and a Ram in carved oak. Sculptures that would grace any garden or meadow.

HELEN NOCK is making new work from slate for this exhibition too, but meanwhile there are several of her mosaic inlaid low tables around the gardens, a striking sculpture 'Porthminster Light' with glass inlay and an elegant birdbath with blue glazed bowl already available.



Further delights within the gallery are crepe-de-chine scarves by CRESSIDA BELL in luscious Bloomsbury-inspired designs, and of course the well-illustrated book 'JOHN MALTBY ~ A Life of Creativity' which gives a rounded account of his life and work.

We look forward to seeing you at the gallery during the exhibition, or being in touch via our website where many more exhibits will be displayed.

YEW TREE GALLERY is on the B3306 coast road between St Ives and St Just, near Morvah and Pendeen in West Cornwall. TR19 7TS Tel: 01736 786425 gilly@yewtreegallery.com